

Immunostains

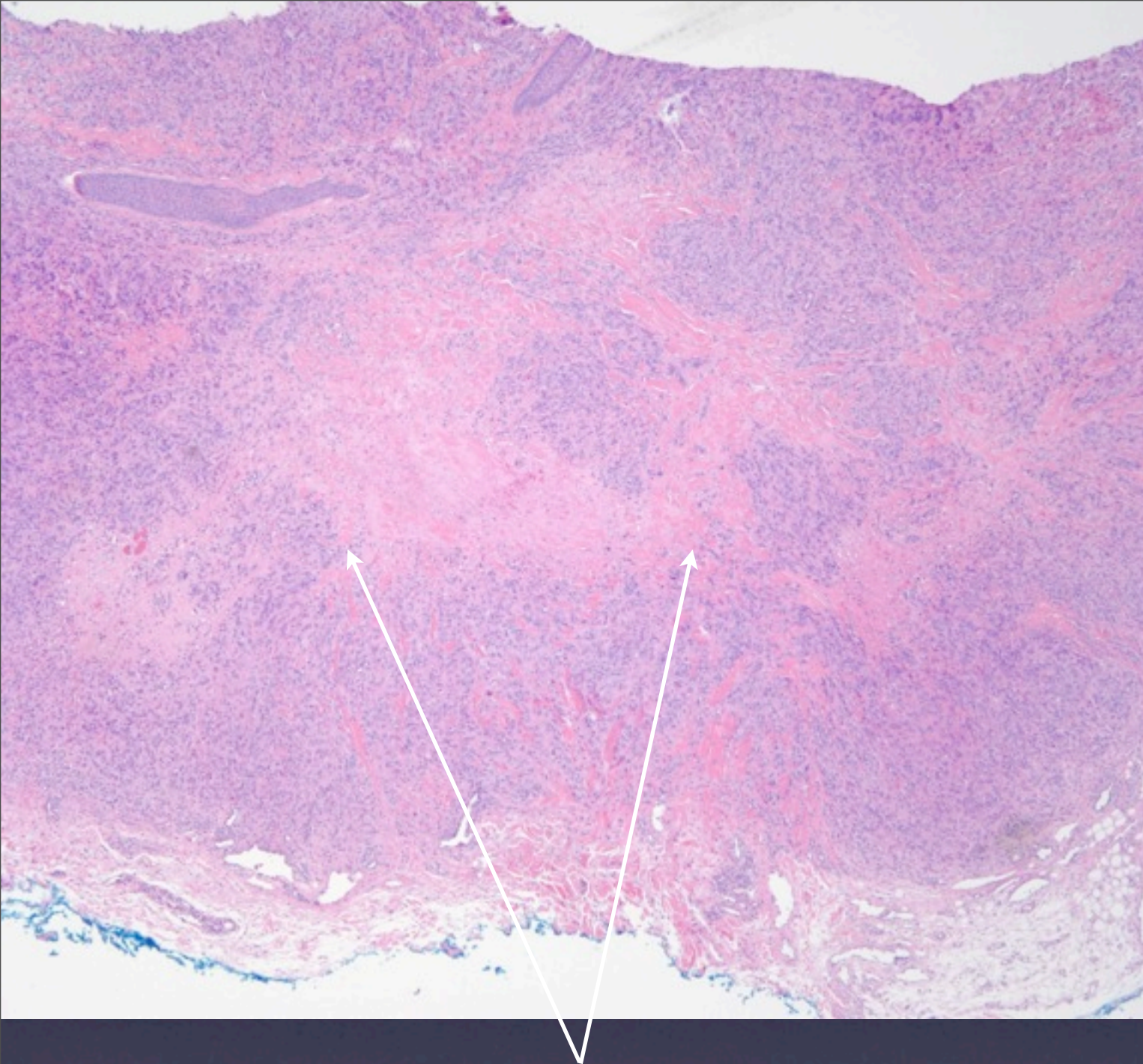
- Cytokeratin and Vimentin positive
- Negative for CK7, CK20, PSA, TTF-I, S100, MelanA, HMB-45, CD31, CD34, D2-40

Poorly Differentiated Malignancy Consistent with Metastatic Epithelioid Sarcoma

Notes

- This is a complicated case in a young male (34 years)
- By histopathology, this is a pleomorphic tumor which was positive for cytokeratin. However all other epithelial markers were negative.
- History obtained later indicated the patient had a diagnosis of a poorly differentiated tumor with a working diagnosis of epithelioid sarcoma

Pleomorphic
epithelioid cells



Geographic zones of necrosis

Must have a VERY High Index of
Clinical Suspicion